



THE AYRES FAMILY

Shield Ranch Family, Land Owners

Pat Ayres, Bob Ayres, Vera Ayres Bown

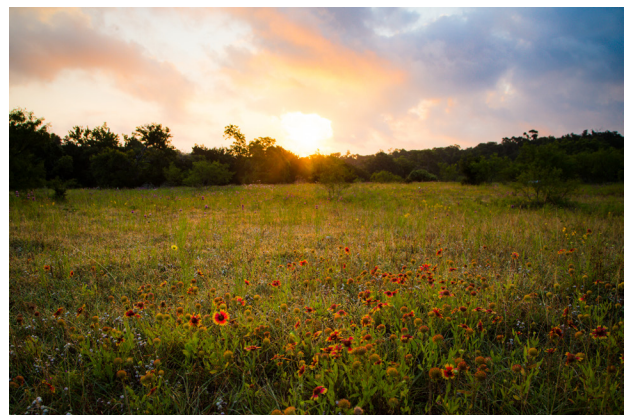
We became advocates for Barton Creek out of concern that poorly managed growth in the watershed would degrade water quality with adverse impacts to the health and well-being of our community.

We have managed our family ranch to enhance the quality and quantity of clean water entering Barton Creek through practices such as rotational grazing, brush control and prescribed burning. In 1998, we placed over 90% of Shield Ranch under conservation easements with the Nature Conservancy and the City of Austin. These easements extinguish, forever, the possibility of future residential sub-division or commercial development.

We love the natural beauty and restorative powers of Barton Creek and we want future generations to have this experience, too.

Read more about the Shield Ranch at <https://www.shieldranch.com>

-as told by Bob Ayres



BARTON CREEK

TIME STREAM